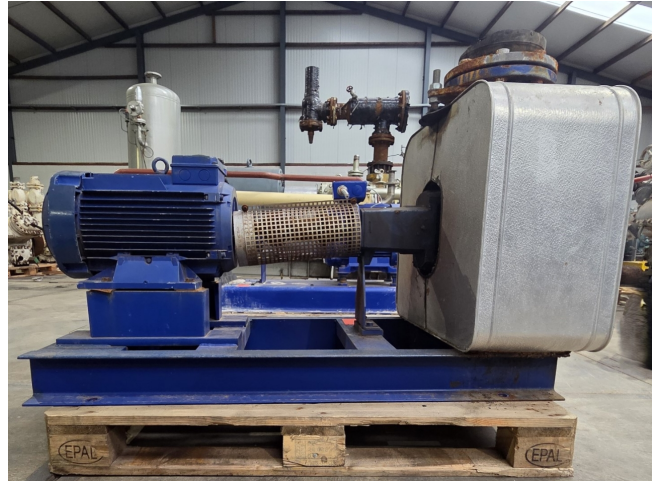


# KSB ETANORM 150-200M7

## Specifications

Марка	KSB
тип	ETANORM 150-200M7
Объемный расход Q макс. (м <sup>3</sup> /ч)	345,6
Высота доставки H макс. (м)	6,0
Мощность макс. (кВт)	11,0
Remarks	Y.o.b. 1994
Stock	2



## Description

### Used KSB ETANORM 150-200M7

Used KSB ETANORM 150-200M7 water pump with KSB QU 160M4B-40 electric motor - 50/60 Hz - 11,0/12,7 kW - 1450/1740 RPM. The pump has the following specifications: Qmax: 345,6 m<sup>3</sup>/h - Hmax: 6,0 m - Pmax: 11,0 kW. Dimensions: 1550x680x920 mm (LxWxH).



